

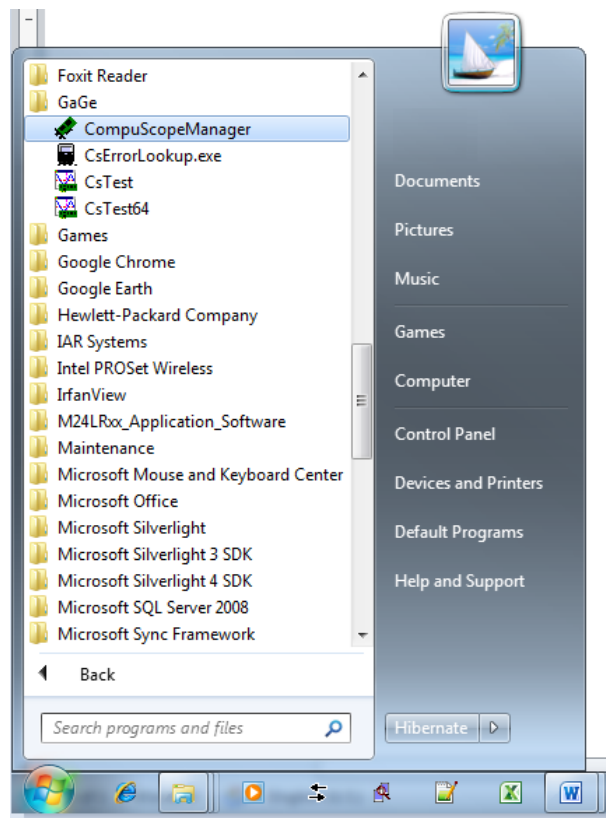
Gage FCiX Guide

First Things First

Install the software on your Client Computer. Please follow the instructions on your Gage Software CD included with your FCiX Box.

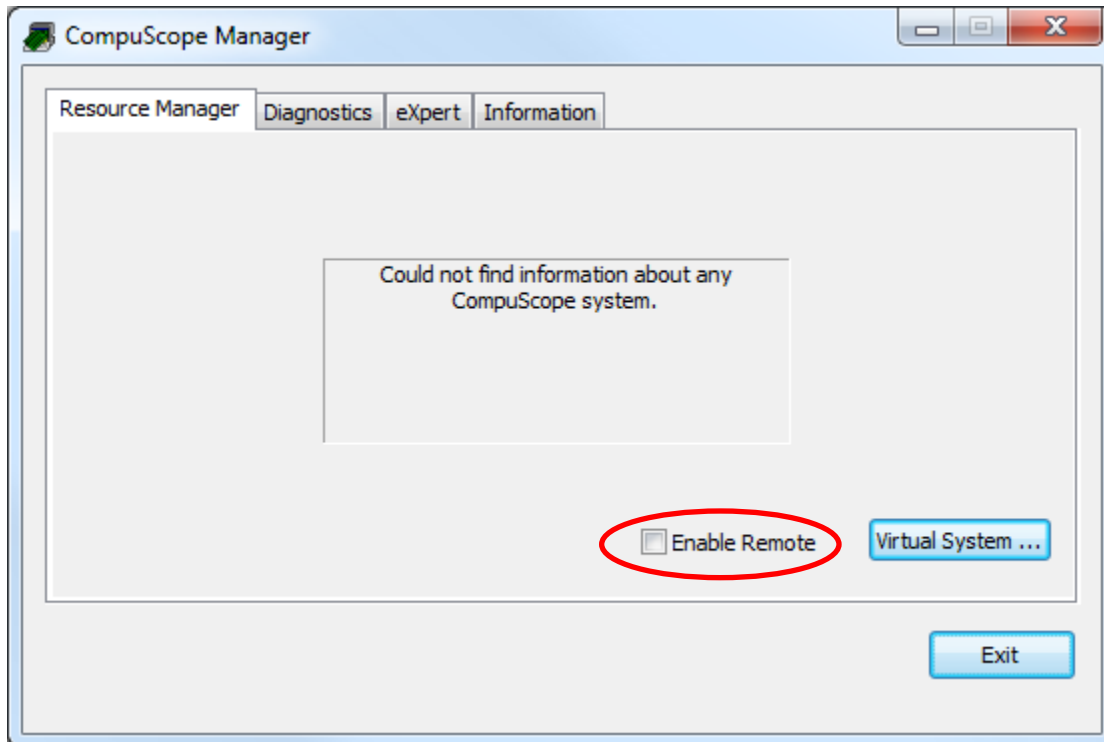
Run CompuScopeManager

Select CompuScopeManager from the Gage folder in the Windows Start Menu, as illustrated below:



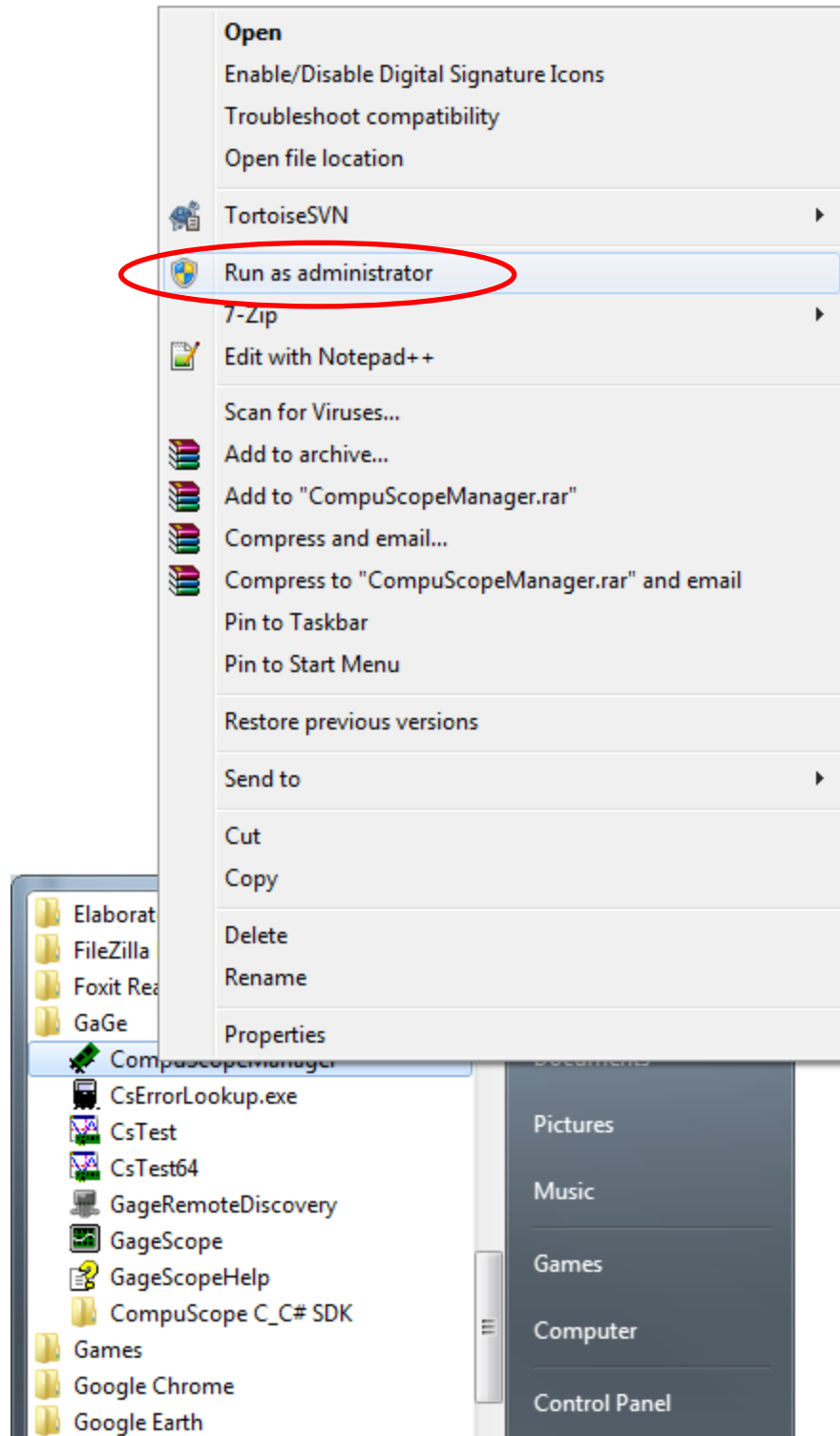
The CompuScopeManager application should appear as follows:

Gage FCiX Guide



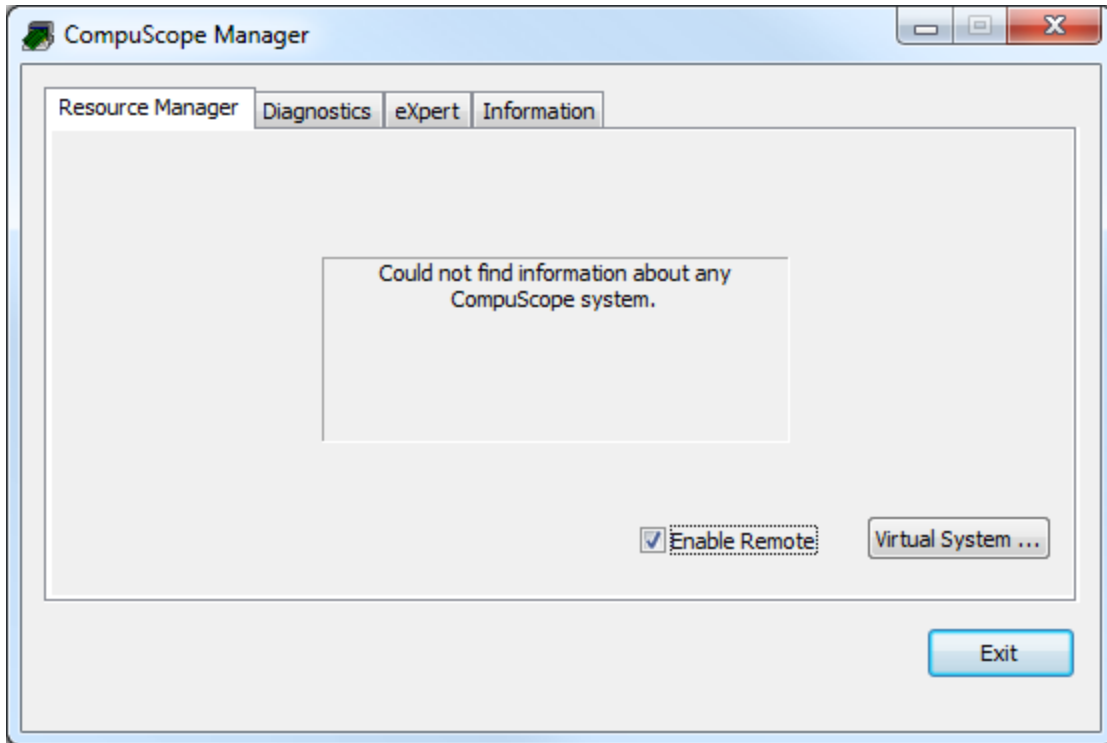
In Order to operate FCiX instruments you must first enable the discovery of remote systems by checking off the “Enable Remote” check box circled above. This is done in order to limit the interaction of remote systems with users who have a CompuScope installed in their Computer or are using a LapScope extension chassis. If the control is greyed out then you must close the CompuScopeManager Application and restart it running as the administrator as shown below:

Gage FCiX Guide



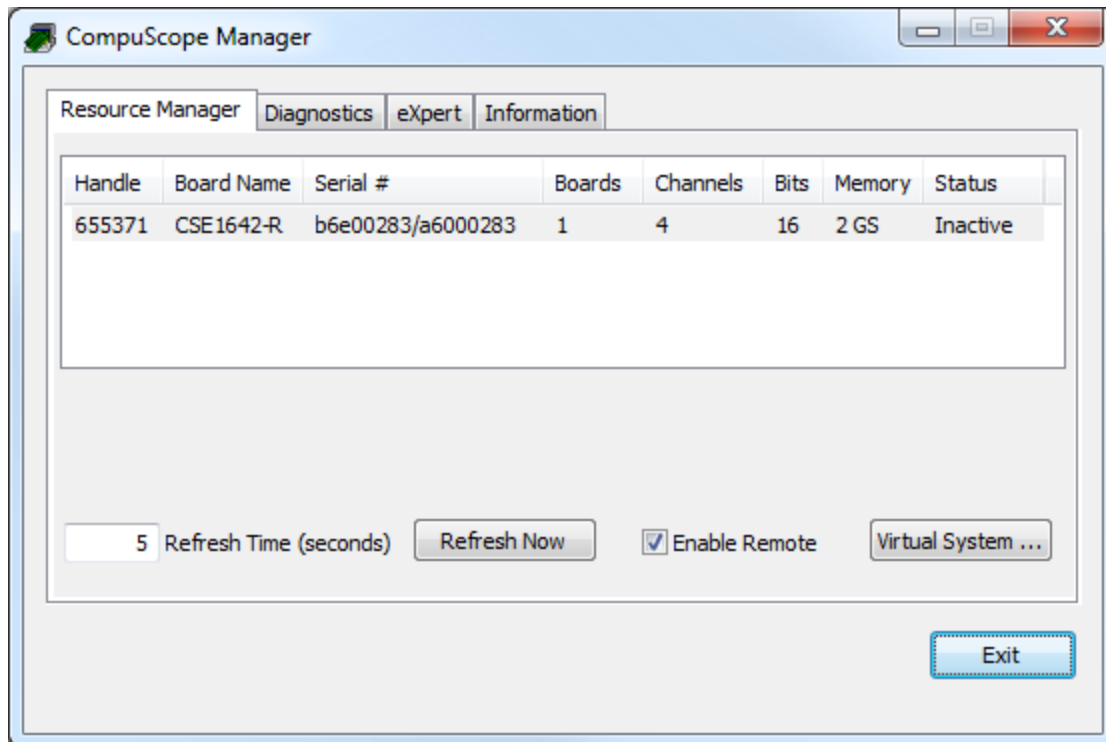
The “Enable Remote” check box should now be enabled and you must now check off the option and exit the application as shown below.

Gage FCiX Guide

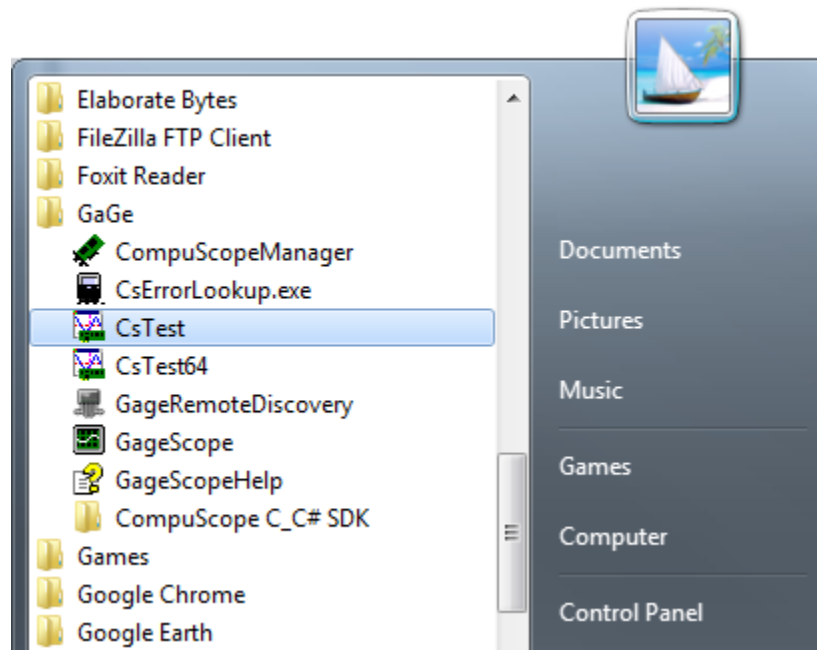


Restart the application. Running as the administrator should not be necessary since the selection should have been sent to the system. CompuScopeManager should now look like the figure below with your FCiX system identified.

Gage FCiX Guide

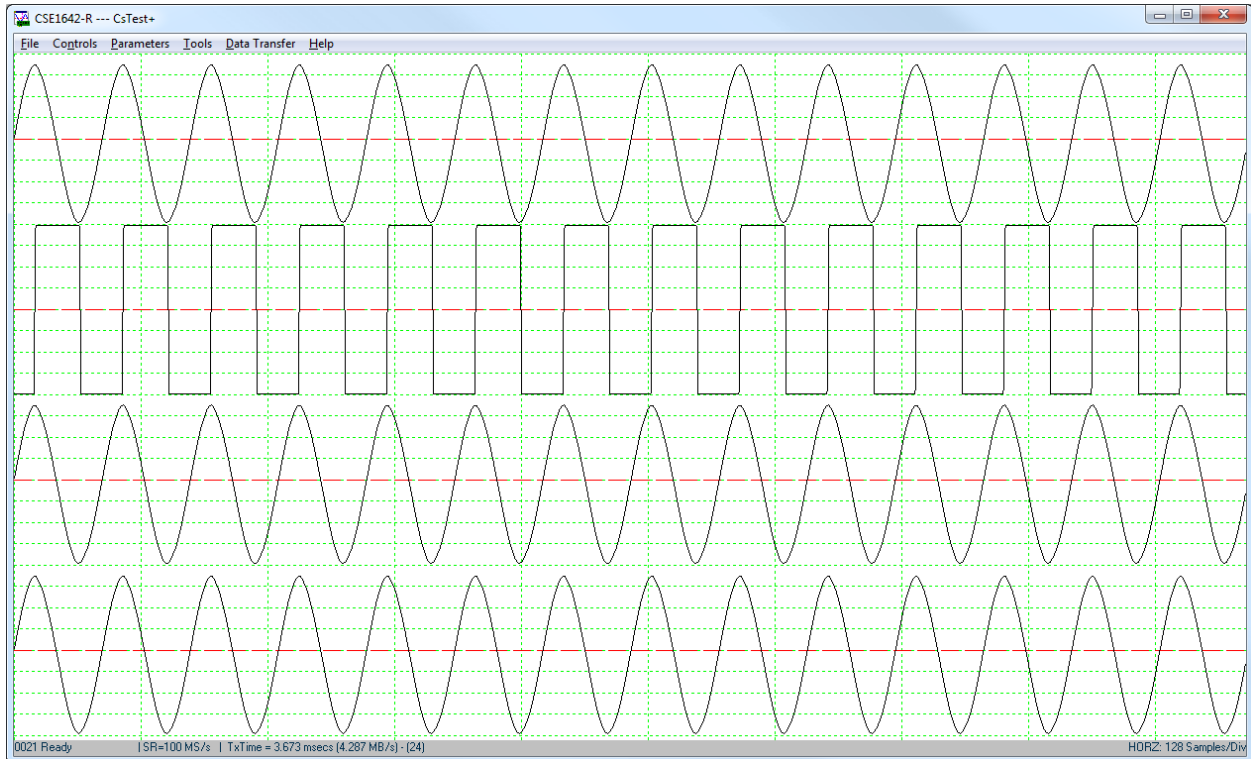


At this point, you can use the standard Gage software that you have installed on your system.



Gage FCiX Guide

Shown above is the Windows start menu and the default GaGe installed applications after the standard installation of the driver with the default applications installed in the Windows start menu. Selecting CsTest+ will provide a window similar to the one depicted below within which you can begin running your remote FCiX system. Shown below is a Razor class FCiX unit with all four channels connected to a signal source.

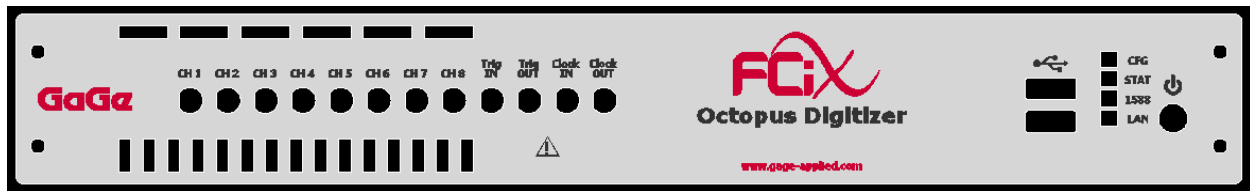


Currently, there are two model types of FCiX available. The Razor class of digitizer unit features 4 input channels and 100 MS/s or 200 MS/s maximum sample rates at 16 bits of vertical resolution. The front panel appearance is depicted below:



The Octopus class of digitizer unit features 8 channels with 125 MS/s maximum sample rate at 14 bits of vertical resolution. The front panel appearance is depicted below:

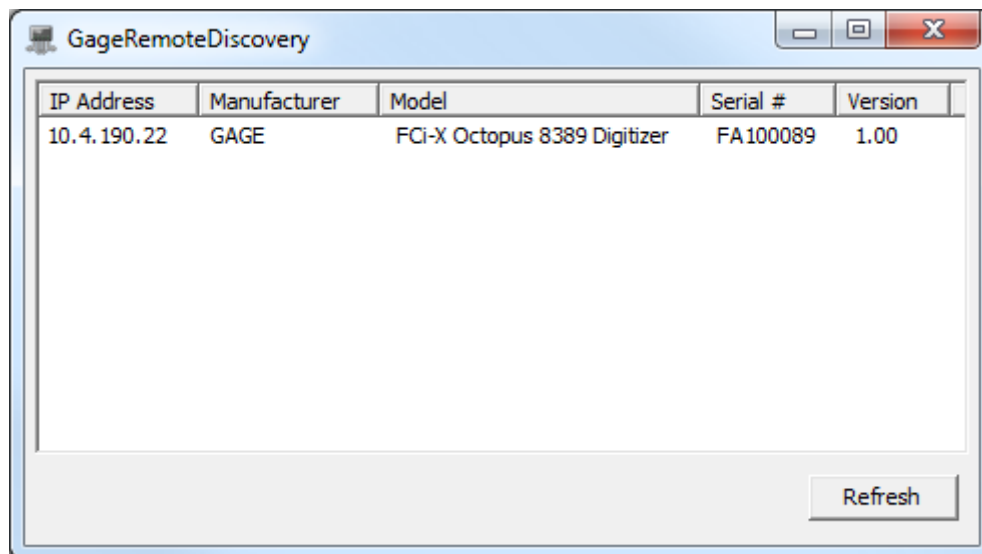
Gage FCiX Guide



The key features of these digitizers are summarized in the following table.

A/D SAMPLING	FCI-RAZ-041	FCI-RAZ-042	FCI-OCT-001
Input Channels	4	4	8
Resolution	16 Bit	16 Bit	14 Bits
Max. Sampling Rate	100 MS/s	200 MS/s	125 MS/s
Analog Bandwidth	65 MHz	135 MHz	>100 MHz

Also included with the package is the GageRemoteDiscovery tool that allows the user to identify the unit on the local network sub-net. Starting the application presents the interface below. In addition to the Manufacturer, model, Serial Number and Version is the IP address for the unit.



Next, we can input the IP address into a standard web browser. You may also double click the IP Address in the GageRemoteDiscovery windows and the system will automatically launch your preferred browser at the indicated IP Address (10.4.190.22 shown). Please note the following limitations and configuration requirements: Internet Explorer 8 and earlier versions are not supported (Only Windows XP and earlier OS'

Gage FCiX Guide

should be affected) and your browser must have Java enabled (this is now standard practice on Firefox). For the remainder of this section, Google's Chrome browser is shown.

Shown below is the main page of the browser interface and shows a variety of configuration settings. Your settings and web page configuration may differ from the pages shown here.

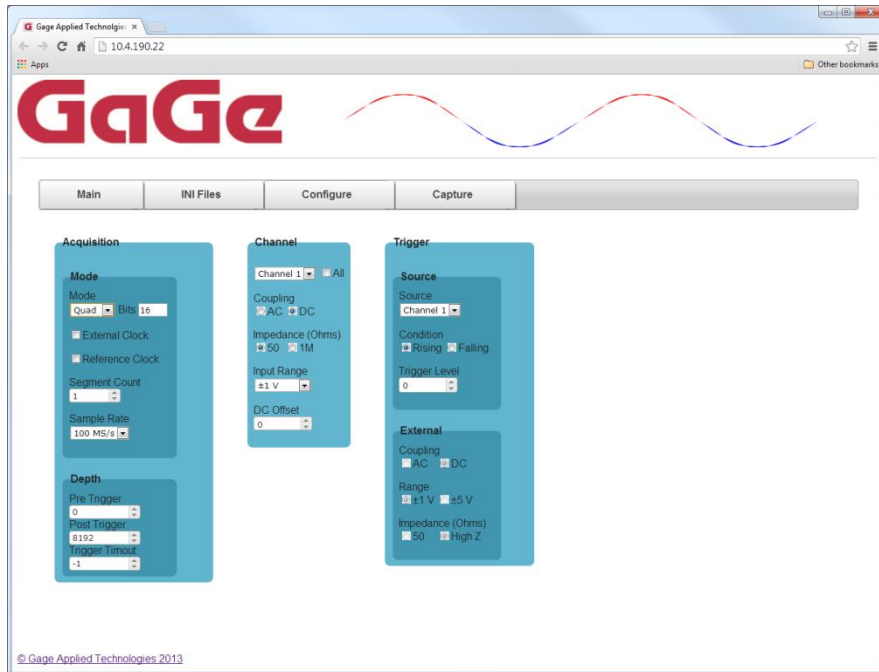
The screenshot shows a web browser window with the address bar displaying '10.4.190.22'. The page features the 'GaGe' logo and a navigation bar with tabs: 'Main', 'INI Files', 'Configure', and 'Capture'. The 'Configure' tab is active, displaying a table of system information and configuration options.

Instrument:	Electron FCI
Serial Number:	12345678
Description:	FCI Red Box
Board Name:	CSE1642-R
Memory Size:	2 GB
Channel Count:	4
Sample Bits:	16
Physical Address:	EC-9E-CD-04-88-92
Hostname:	electronBB6
DHCP:	<input checked="" type="checkbox"/> Enabled
Subnet Mask:	255.255.255.0
IP Address:	10.4.190.22
Default Gateway:	10.4.190.1
DHCP Server:	10.4.190.2
Machine Uptime (D:H:M:S):	0 : 0 : 13 : 41

At the bottom left of the page, the copyright notice reads: © Gage Applied Technologies 2013.

Selecting the Configure tab selects an interface that has similar settings and controls as the standard CsTest+ application shown above. These controls should be self-explanatory but the documentation for CsTest+ can be used as a reference.

Gage FCiX Guide



Switching to the Capture Tab and pressing the Capture button will provide results similar to the picture below (differing by your own selection of signals).

